
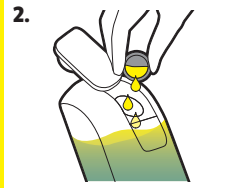
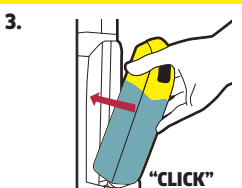



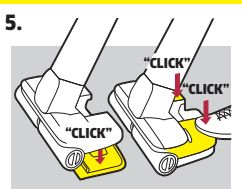
## FIRST STEPS BEFORE USE ERSTE SCHRITTE VOR DEM EINSATZ

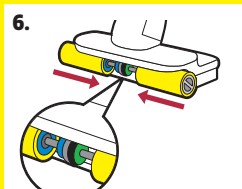
1. 

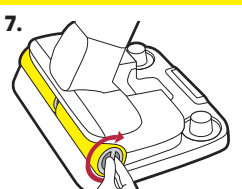
Fill fresh water tank / Frischwassertank füllen
2. 

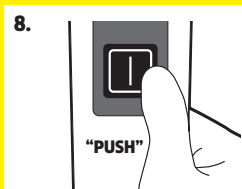
Fill in Kärcher detergent (1/2 cap) / Kärcher-Reinigungsmittel einfüllen (1/2 Deckel)
3. 

Insert fresh water tank / Frischwassertank einsetzen
4. 

Insert both charged batteries / Geladene Akkus einsetzen
5. 

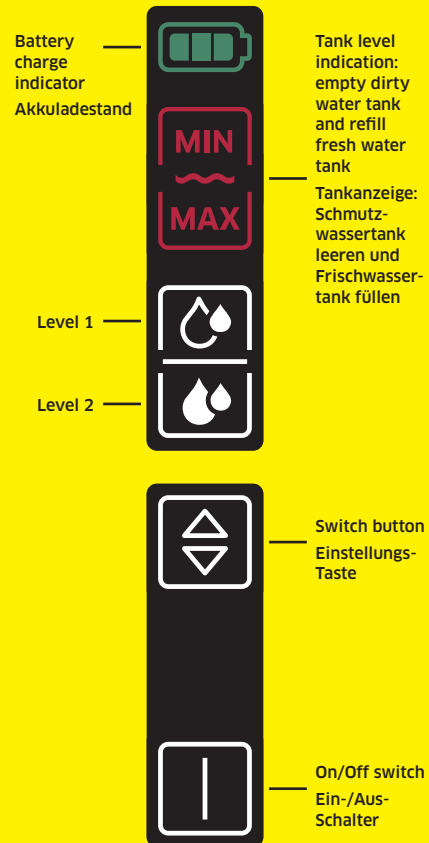
Place device upon dirty water tank and push down / Gerät mit Schmutzwassertank verrasten
6. 

Check color code system / Farbcodesystem beachten
7. 

Roller fixation / Walzen einsetzen
8. 

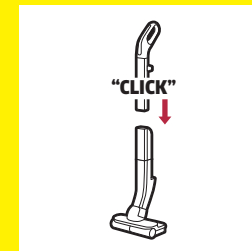
Press On/Off button and start cleaning / Zum Starten Ein-/Aus-Schalter drücken

## DISPLAY

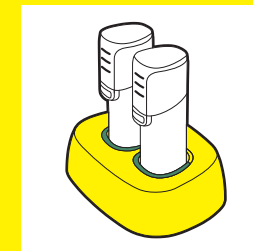


# FC 4-4 QUICKSTART GUIDE

### First assembly Erstmontage



Prior to first operation, place the battery pack(s) on the charger and charge completely

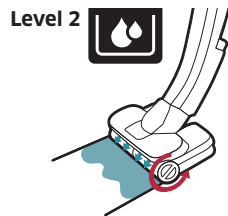
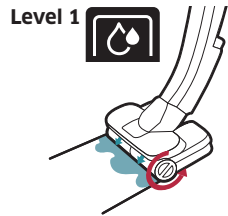


Scan code for videos  
Code scannen für Videos



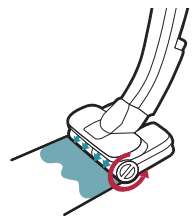


**SWITCH CLEANING MODE  
REINIGUNGSMODUS  
WECHSELN**

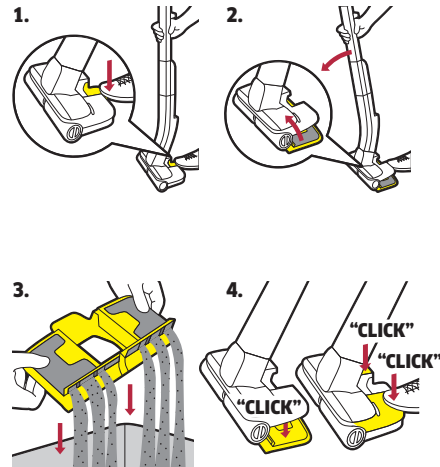


**USE LEVEL 2 UNTIL  
ROLLERS ARE  
SUFFICIENTLY  
MOISTENED**

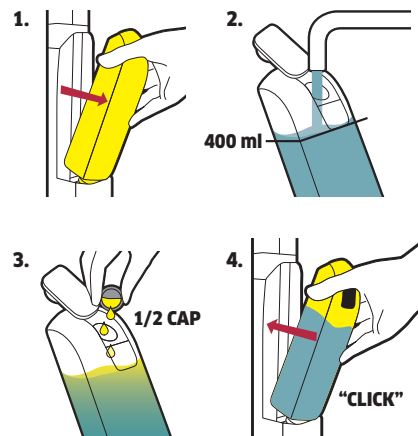
**LEVEL 2 VERWENDEN BIS  
WALZEN AUSREICHEND  
BEFEUCHTET SIND**



**EMPTY DIRTY WATER  
TANK  
SCHMUTZWASSERTANK  
LEEREN**

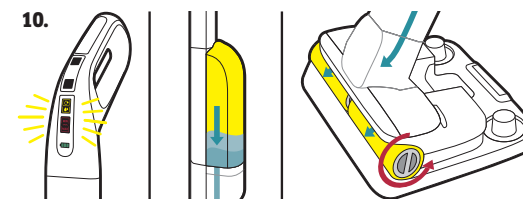
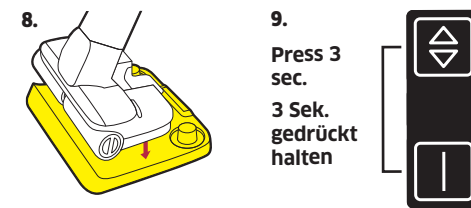
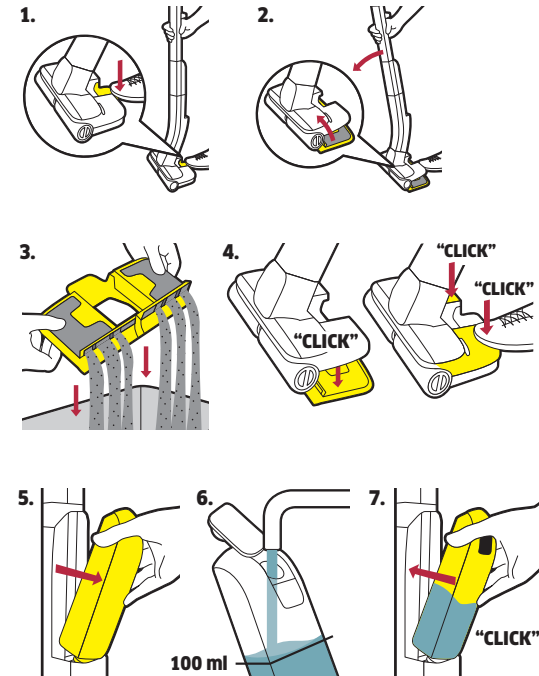


**REFILL FRESH WATER TANK  
FRISCHWASSERTANK AUFFÜLLEN**



**CLEANING AND STORING  
REINIGUNG UND AUFBEWAHRUNG**

**Step 1: Clean the device  
Schritt 1: Gerät reinigen**



Please wait about 2 min. Bitte ca. 2 Min. warten



**Step 2: Store the device  
Schritt 2: Gerät verstauen**

